

MAKEOVER



Open and shut CASE

By incorporating space from a bathroom, designer Bryce Henderson turned a cramped galley kitchen into a spacious entertaining area



“THE KITCHEN was neither practical nor conducive to socialising,” explain the Steyns who bought this Seapoint apartment as a base when their daughter went to university in Cape Town. They asked designer Bryce Henderson of TAG Design to remodel it while renovating the rest of the apartment.

HOW IT WENT FROM DRAB TO FAB As the Steyns didn't need such a large bathroom, Bryce decided to downsize it and reposition the front door to increase the size of the kitchen. This created space for a separate, concealed scullery and a smaller bathroom. “Having an area where the dirty dishes can be hidden is a boon in an open-plan arrangement where the kitchen is always visible,” says Bryce.

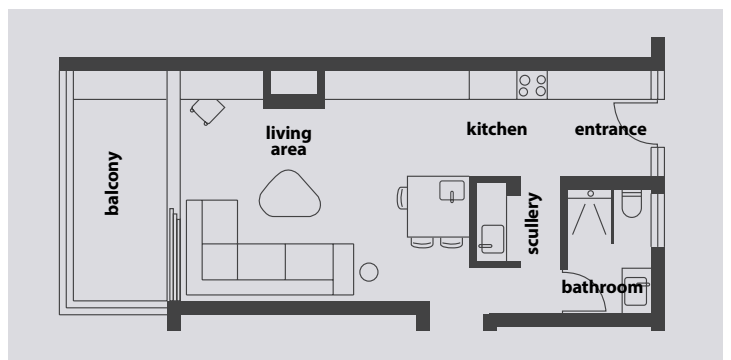
He designed new cabinetry, which runs the length of the one wall, extends into the living area and culminates in a media cabinet. “It blurs the boundary between the



kitchen and living area, creating a sense of continuity and spaciousness,” he explains. While the cooking is done in the original kitchen, the cabinet in the living area accommodates the coffee machine, toaster, crockery and cutlery. These are hidden by pocket doors, which slide away neatly when they need to be accessed. Workspace that was lost by removing cabinets on one side was regained with the addition of a small island with a prep bowl, which also serves as a dining area.

The stepped ceiling was a challenge, but by installing LED lighting along the top of the cabinetry, it’s now become a design feature. The tiled flooring throughout was replaced with wood-look vinyl.

NOW THE KITCHEN IS stylish and contemporary and blends seamlessly with the living area. “There’s no more bumping into one another when we cook,” say the Steyns, “and when we entertain, we can accommodate so many more guests.” **GH**



THIS SPREAD, CLOCKWISE FROM BOTTOM LEFT: ● Adding a warm contrast are timber shelves and wood-look vinyl flooring. ● The designer chose a dark duco finish for the cabinets so that they are unobtrusive. ● Cooking is done in what was the original kitchen. An ashwood splashback with a beautiful grain softens the industrial look of the cabinets. ● The island has a prep bowl and serves as a dining area. The narrow light fitting from Weylandts was chosen to fit under the low ceiling. The dining chairs are also from Weylandts.

SOURCES TAG Design tagdesign.co.za Weylandts weylandts.co.za